



ADIT

- Demountable acoustic wall panel
- Ready to install kit
- Vertical or horizontal installation on walls

CONDITIONS OF USE

- For internal fitout of buildings
- To be installed in a closed-off building

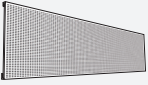







STORAGE

The products must be:

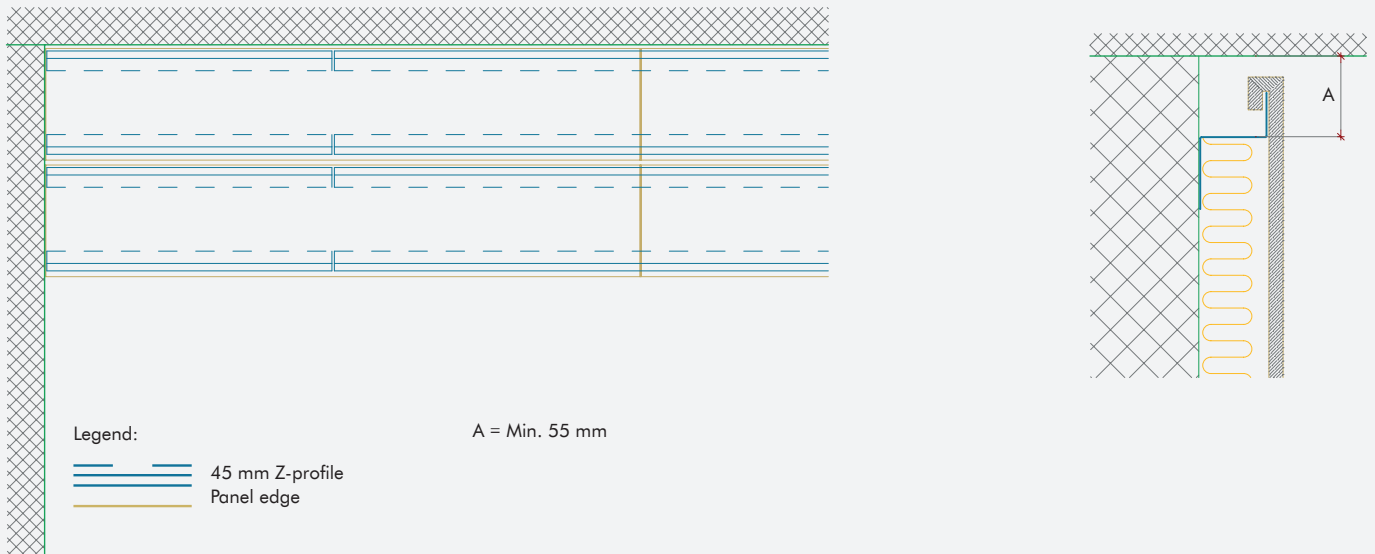
- stored indoors clean and dry
- positioned on a level base
- protected from direct moisture
- stored at humidities of less than 70% RH and temperatures of less than 50°C
- protected from impact and shock
- stacked max. 1 pallet on top of another

CONTENT OF THE KIT

Below list of components is part of the Adit kit

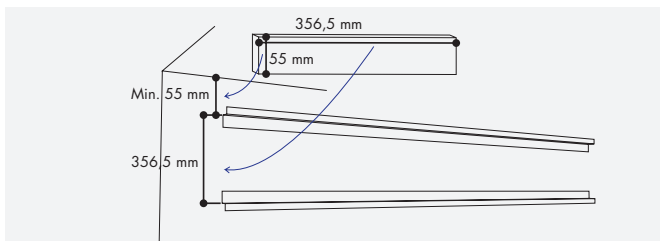
	PRODUCT NAME	SAP NO.	SIZE
	Adit panel 1200 (2 per package)	655954	450 x 1200mm
	Adit panel 2400 (2 per package)	180369	450 x 2400mm
	Z45 profile, 1100 mm	656969	45 x 1100
	Z45 profile, 2300 mm	199089	45 x 2300
T-grid		215384	20 x 360 x 40
		199108	25 x 32/7.5 x 450
	DANOpore	656695	33 x 350 x 550
	Measuring template	657259	55 x 356.5
Extra		316313	
		108961	

WALL LAYOUT



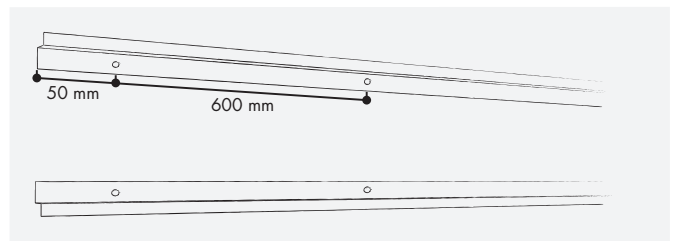
INSTALLATION

Before installation, please ensure that fixtures to primary construction can withstand the load of the ceiling.
Best Practice: Use of clean cotton gloves when handling product tiles will ensure a good result and a ceiling without fingermarks.



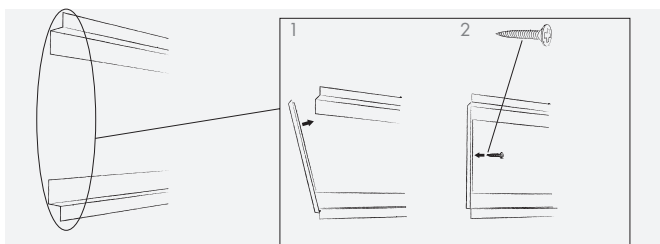
MEASURING

- Use the measuring template supplied to mark the positions of the Z profiles.



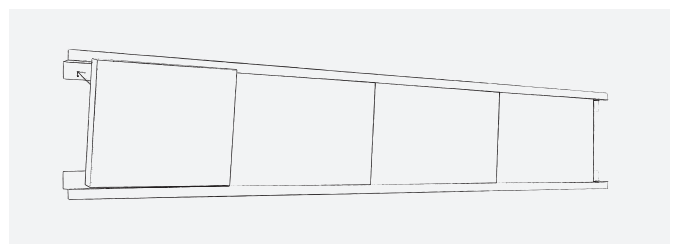
Z-PROFILES

- Install the Z profiles horizontally. Choose the method of securing the angles in accordance with the substrate.
- The large flange on the Z profiles must be secured to the wall.
- When installing several Adit elements in continuation of each other it will be an advantage to stagger the joints of the uppermost Z profiles by half a length in relation to the joints of the elements in order to ensure that the elements are level.



END COVER

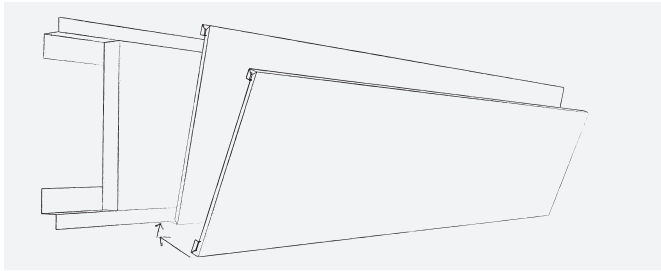
- Where elements do not run from wall to wall, use the end covers supplied to cover the mineral wool at the visible ends. Push the end cover behind the Z profiles and secure with a screw through the pre-bored hole.



DANOPOR

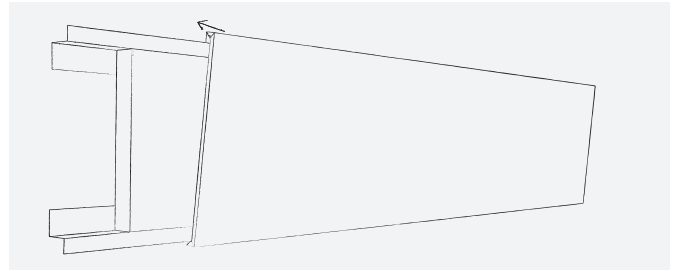
- Install the plastic-wrapped mineral wool between the Z profiles.

INSTALLATION GUIDE ADIT



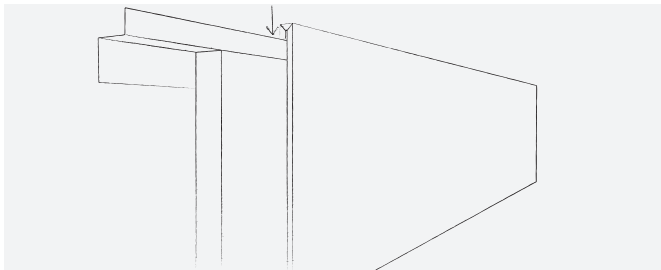
INSTALLATION OF ADIT PANELS

- Push the edge of the Adit panel with the largest fold under the lower profile and press it upwards.



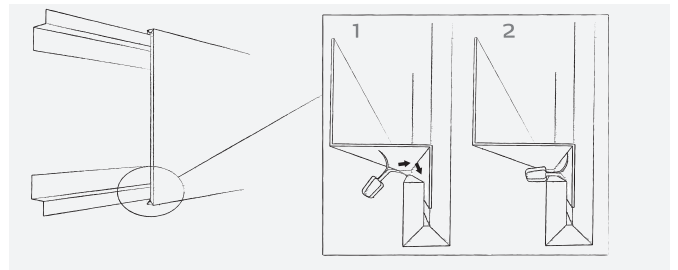
INSTALLATION

- Tilt the Adit element over the top profile.



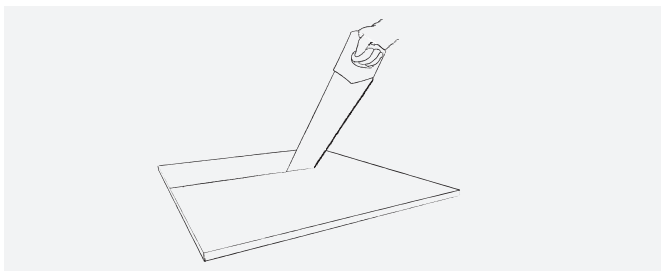
INSTALLATION

- Lower the element over the top profile.
- The element is now in position but can still be adjusted longitudinally.
- Elements should be butted up to one another/the adjacent wall. Where the elements stop in the middle of the wall, fit the supplied end covers and profiles as illustrated below.



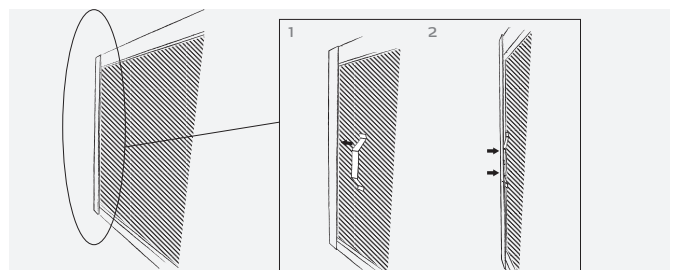
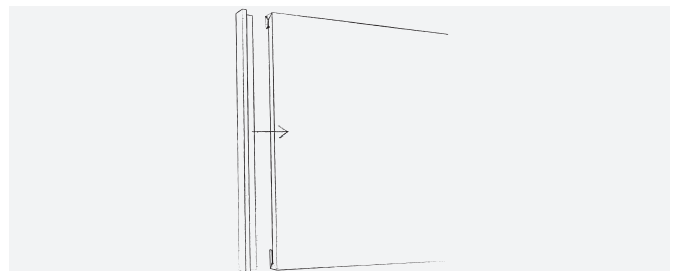
SECURING

- Lock the element in position at the bottom with the help of the hold down clips supplied.



CUTTING

- Cut the elements to size from the front with a fine-toothed saw.



END PROFILE

- Where end covers are installed the associated Adit elements should be capped with an end profile.
- Push the end profile over the end of the element.
- The smallest flange must cover the front of the element.
- Lock the end profile in place using the end profile clip.